

FOR IMMEDIATE RELEASE

For more information contact:

Travis McGee, Griffin Public Relations & Marketing

Phone: (212) 481-3456 Ext 24

email: [tmcgee@griffinpr.com](mailto:tmcgee@griffinpr.com)

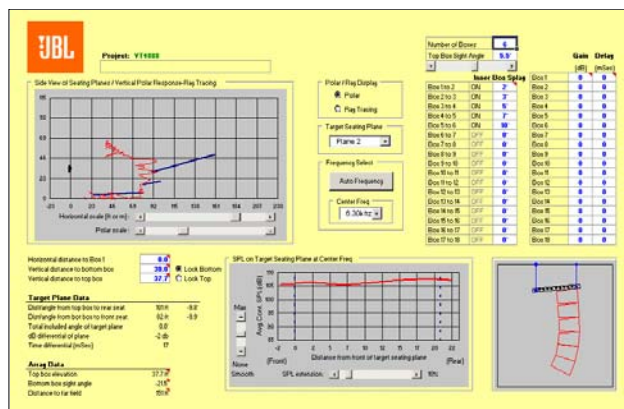
For text and photo files go to the JBL Press Room at: <http://www.jblpro.com/pressroom>

## JBL PROFESSIONAL RELEASES NEW V3 DSP PRESET LIBRARY, ARRAY CALCULATOR AND EASE DLL's FOR WORLDWIDE VERTEC® SYSTEM USER GROUP

NORTHRIDGE, CALIFORNIA, September 12, 2004 — JBL Professional today announced the availability of a new suite of system design and operation tools for use with VERTEC® line array systems. All-new DSP presets, expanded array DLL's for use in EASE 4.0 acoustical modeling software, and an upgraded version of JBL's Line Array Calculator are included in the package.

The new system user tools include the release of JBL's new Version 3.0 digital signal processing library of presets for VERTEC systems. Offering incremental improvements in acoustical performance, the new presets provide improved mutual-coupling characteristics, both on and off axis, for arrays of all sizes. Phase linearity between the low and mid frequency sections has been improved for all models, offering better coherence throughout the crossover region. Passband filters have been optimized to reduce minimum-phase effects, and reduce the number of e.q. filters required. The V3 presets include support for BSS, dbx and other DSP platforms, along with a complete .wig dataframe for use with Crown's new I-Tech line of power amplifiers. The new V3 fileset is being provided this week to system owners worldwide.

"These new system user tools have been developed in cooperation with respected, outside industry practitioners," confirmed David Scheirman, Director of Tour Sound for JBL Professional. "One of the hallmarks of JBL's VERTEC development program is the ongoing input we receive from our worldwide system user group, and our approach to improving the performance of these systems. This enables JBL engineers



---

to continually refine the processes we use to enhance system performance, and give our customers the tools they need to be successful in their applications of our products.”

The new Line Array Calculator (vs. 2.03) includes numerous enhancements for use by system engineers, including a new auto-calculating function for determining array size and attitude for various venue spaces, and a ray-tracing option that links axial alignment of individual boxes to the line array’s graphic display. Finally, EASE DLL’s are now available for the compact VT4887 and midsize VT4888 line array systems in addition to the full-size VT4889. Interested parties should contact their regional JBL sales representative or international distributor for further details.

**About JBL Professional:**

Headquartered in Northridge, California, JBL Professional is the world’s leading designer, manufacturer, and marketer of professional loudspeakers for recording and broadcast, musician, cinema, touring sound, commercial sound and contracting applications. JBL Professional is part of the Harman International network of professional and consumer audio companies. For complete product and company information, go to the JBL Professional website at [www.jblpro.com](http://www.jblpro.com).

**About the Harman Pro Group:**

Headquartered in Northridge, California, the Harman Pro Group is part of Harman International Industries, Incorporated ([www.harman.com](http://www.harman.com)), a leading manufacturer of high-quality, high fidelity audio products and infotainment systems for the automotive, home and professional markets. The Company’s stock is traded on the New York Stock Exchange under the symbol: HAR. Harman Pro Group companies include AKG Acoustics, BSS Audio, dbx, Crown International, JBL Professional, Lexicon, Soundcraft, and Studer.

# # #